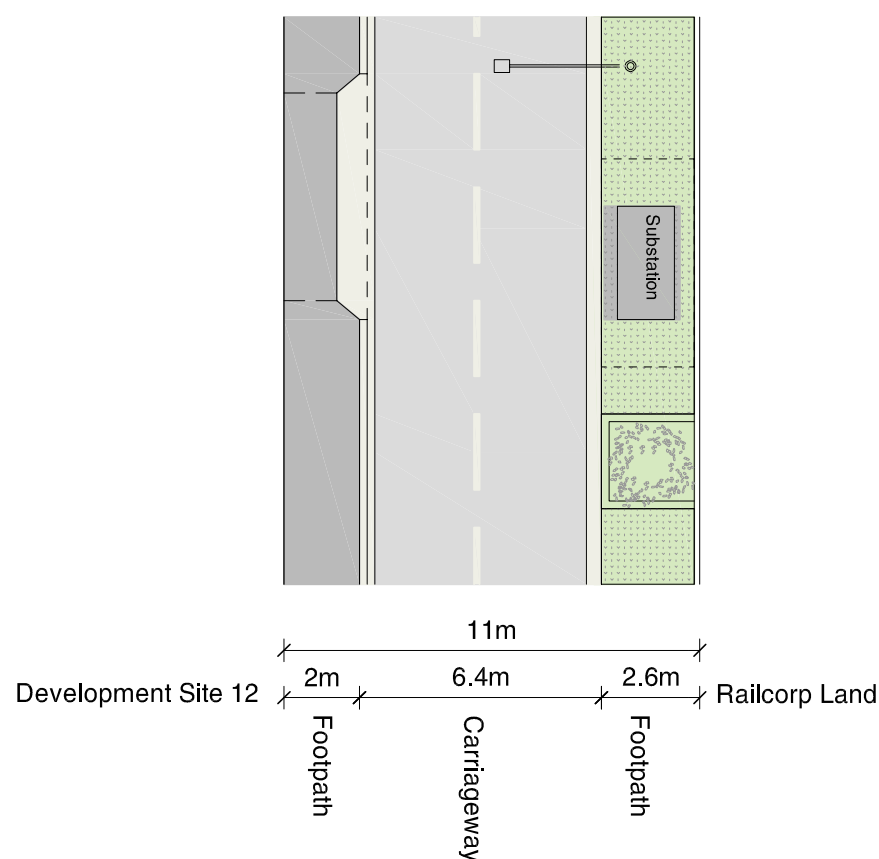
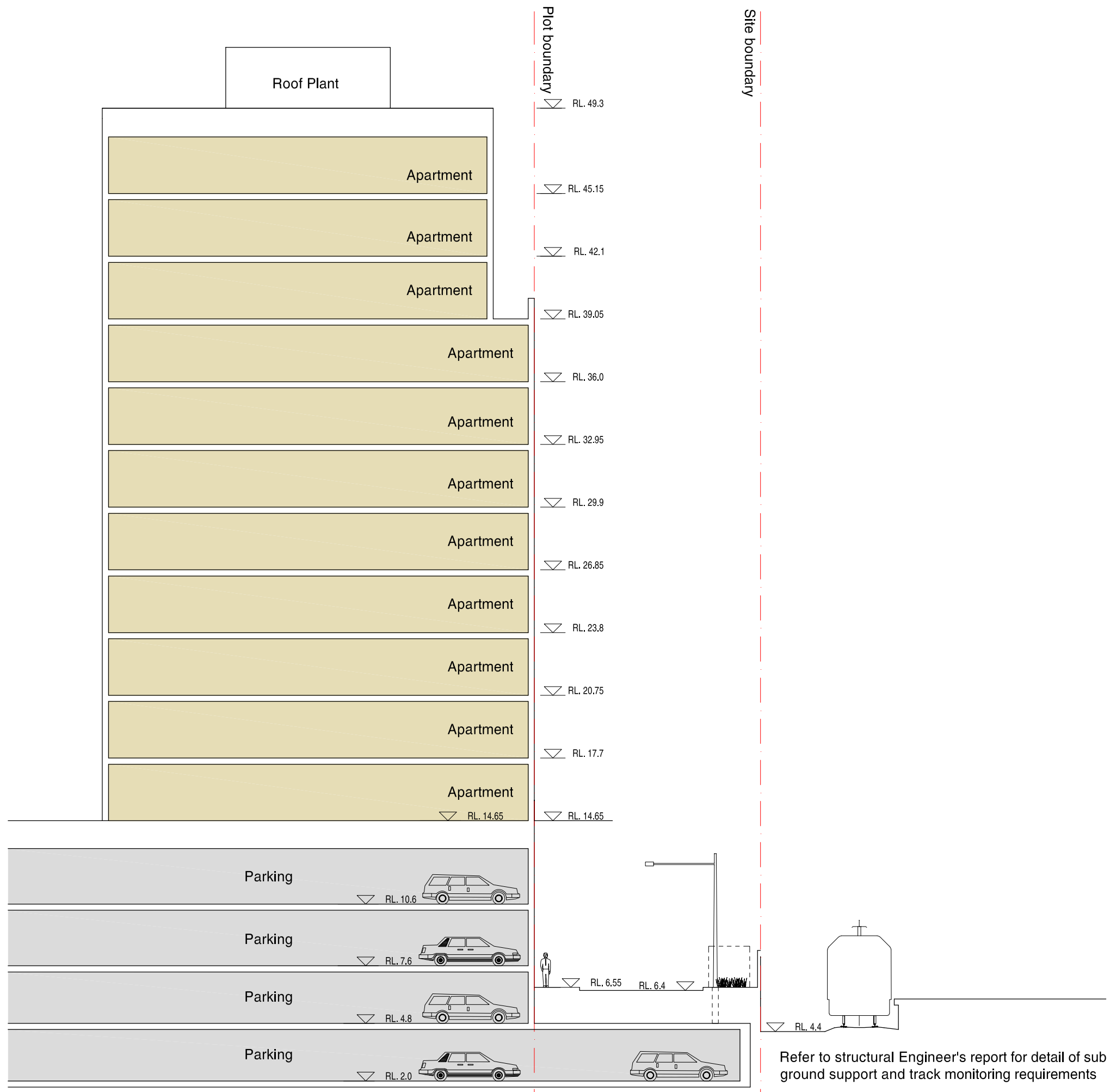
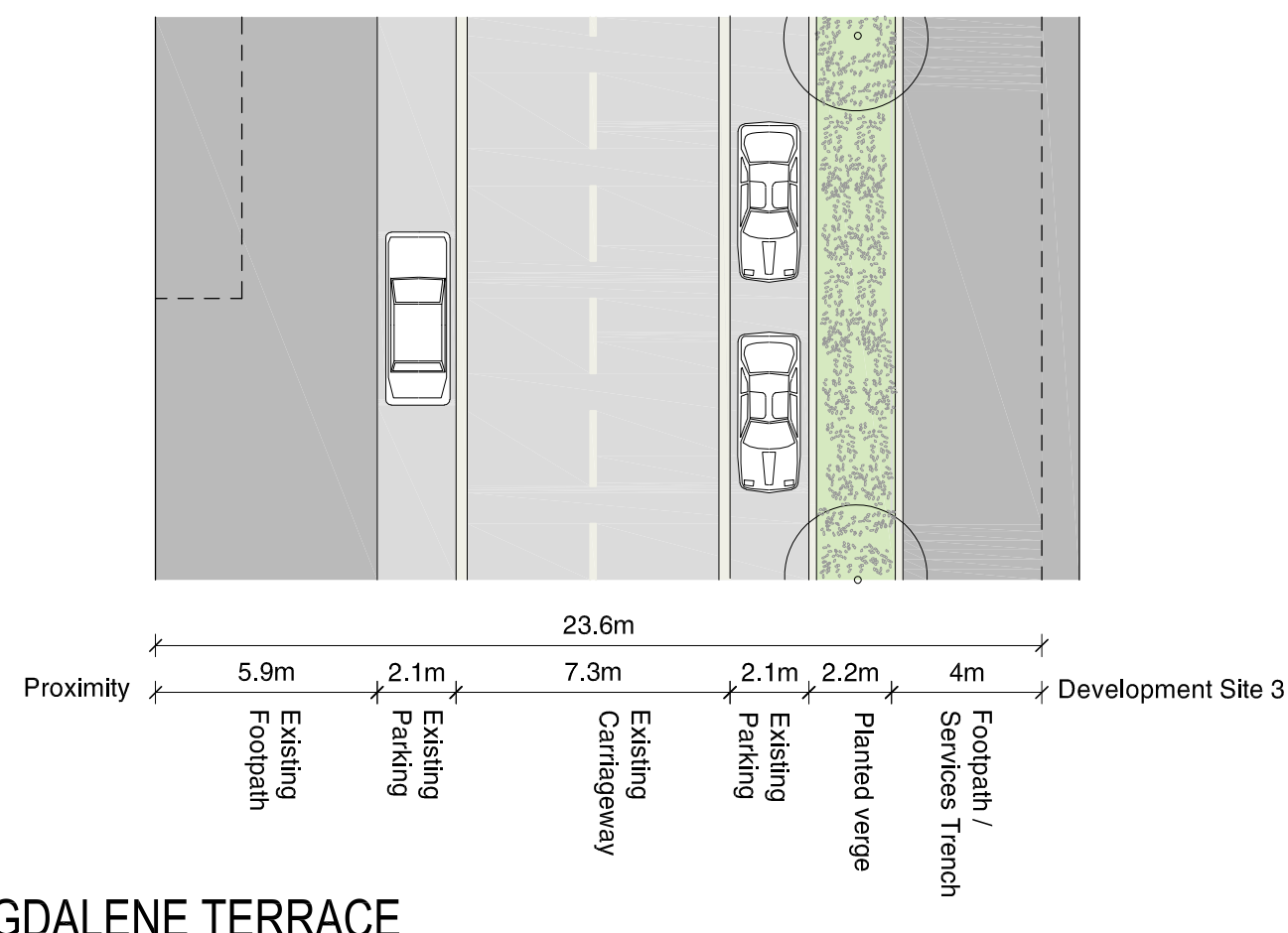
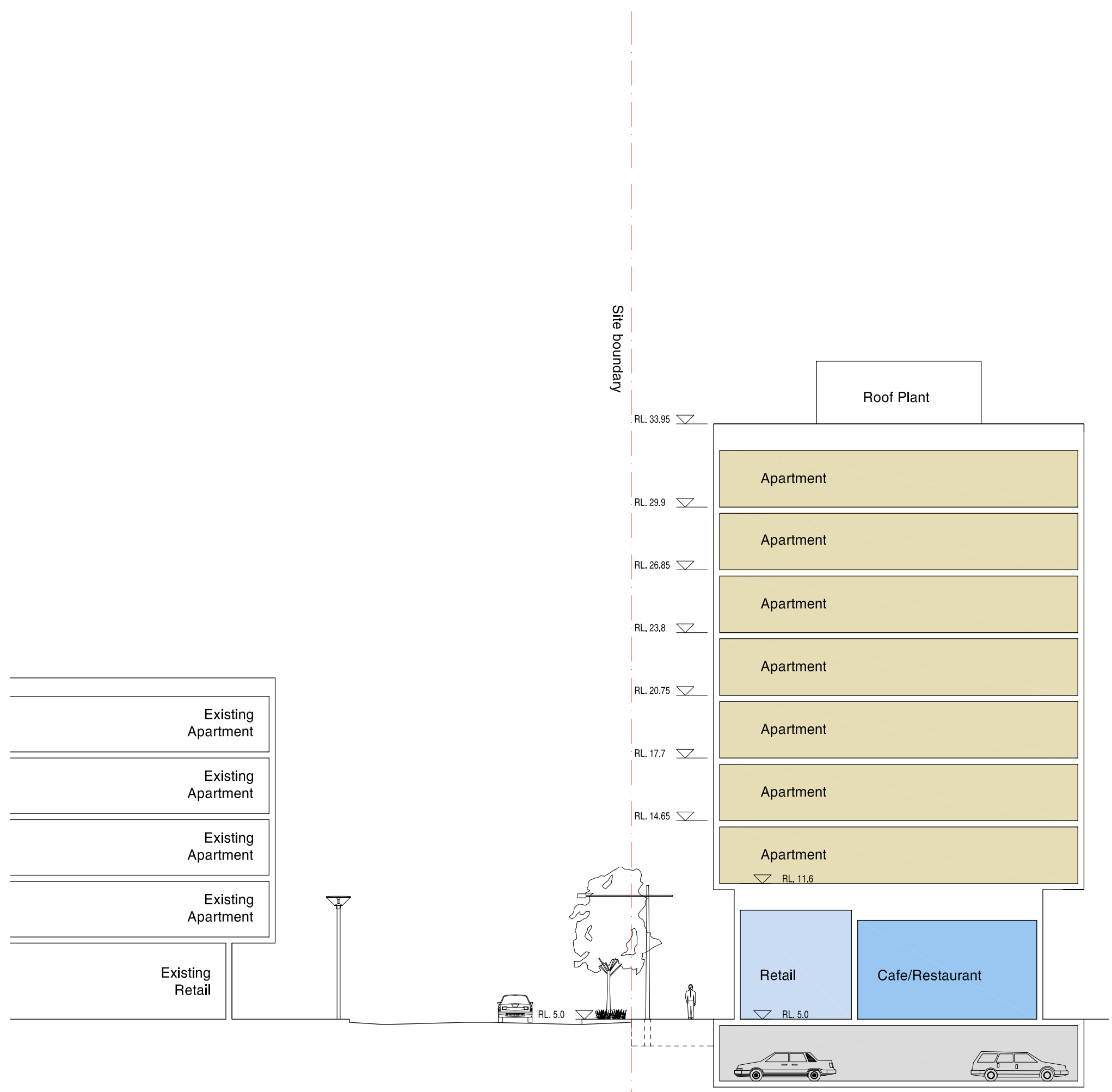


1
DA6-201
SPARK LANE SOUTH
PART PLAN & SECTION

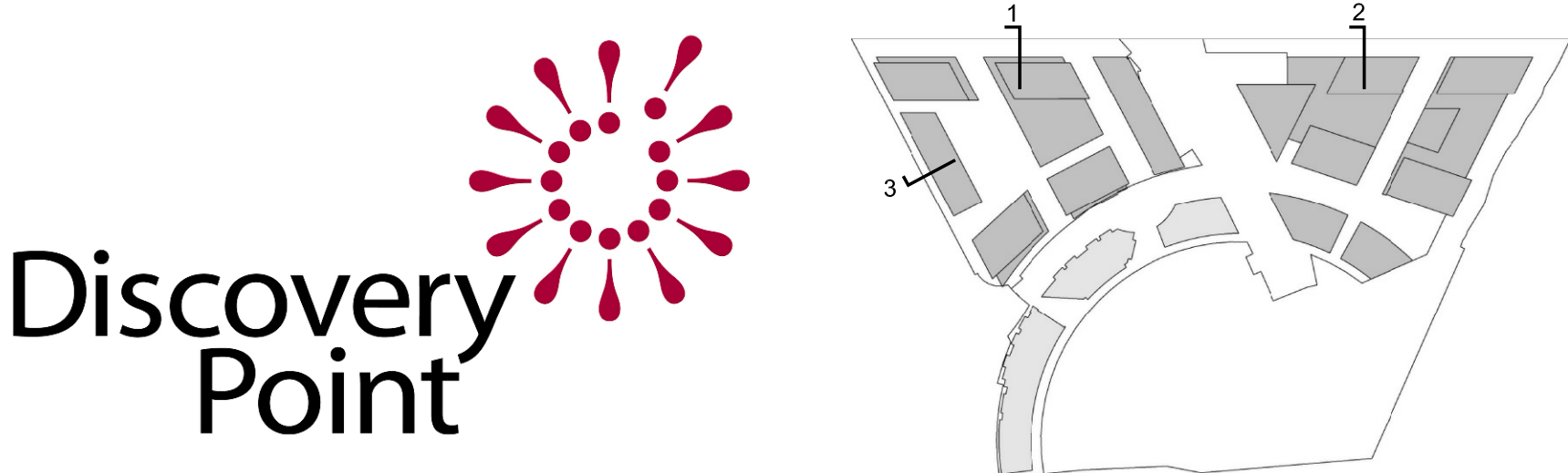


2
DA6-201
SPARK LANE NORTH
PART PLAN & SECTION



3
DA6-201
MAGDALENE TERRACE
PART PLAN & SECTION

FOR INFORMATION
NOT FOR APPROVAL



Discovery Point, Wolli Creek
Stage 1
Indicative Design Scheme
Street Sections
Spark Lane and Magdalene Terrace

C	14.12.10	Magdalene Toe setback amended.	MA	DT
B	10.12.10	Building 4 reduced in height; Above ground parking deleted from Bldg 4/5; Road widths adjusted; Trees deleted within 6m of Rail boundary.	APW	MA
A	16.06.10	FOR INFORMATION ONLY	APW	MA
Revision	Date	Description	Initial	Checked

Check all dimensions and site conditions prior to commencement of any work, the purchase or ordering of any materials, fittings, plant, services or equipment and the preparation of shop drawings and/or the fabrication of any components.
Do not scale drawings - refer to figured dimensions only. Any discrepancies shall immediately be referred to the architect for clarification.
All drawings may not be reproduced or distributed without prior permission from the architect.

Scale	1:200 @ A1, 1:400 @ A3
Drawn	APW
Checked	MA
Project No.	S11191
Status	PLANNING
Plot Date	14/12/2010 6:31:58 PM
Plot File	S:\11100-11199\11191_australand_wollicreek\00_main\cad\plot... ...: \$DA\DA6-201.dwg
Drawing No.	DA6-201
Revision	C

Sydney 1/243 Liverpool Street
East Sydney NSW 2010 Australia
T 02 8354 5100 F 02 8354 5199
email syd@batesmart.com.au
http://www.batesmart.com.au

Melbourne 1 Nicholson Street
Melbourne VIC 3000 Australia
T 03 8664 6200 F 03 8664 6300
email melb@batesmart.com.au
http://www.batesmart.com.au

Bates Smart Pty Ltd ABN 70 004 999 400

BATESSMART